



Motion Video

See the tongue in motion with the AVI files available [here](#).

Videos available include all targets, produced by both the IN and the NH speakers.

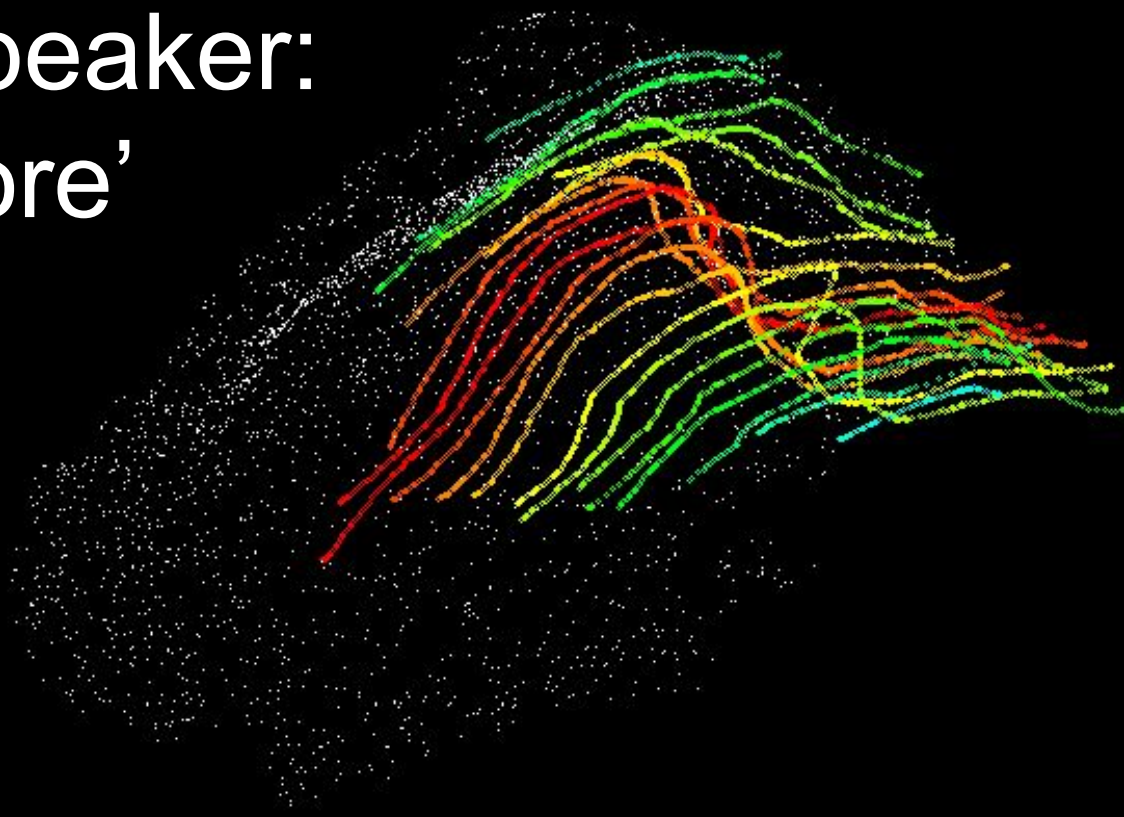
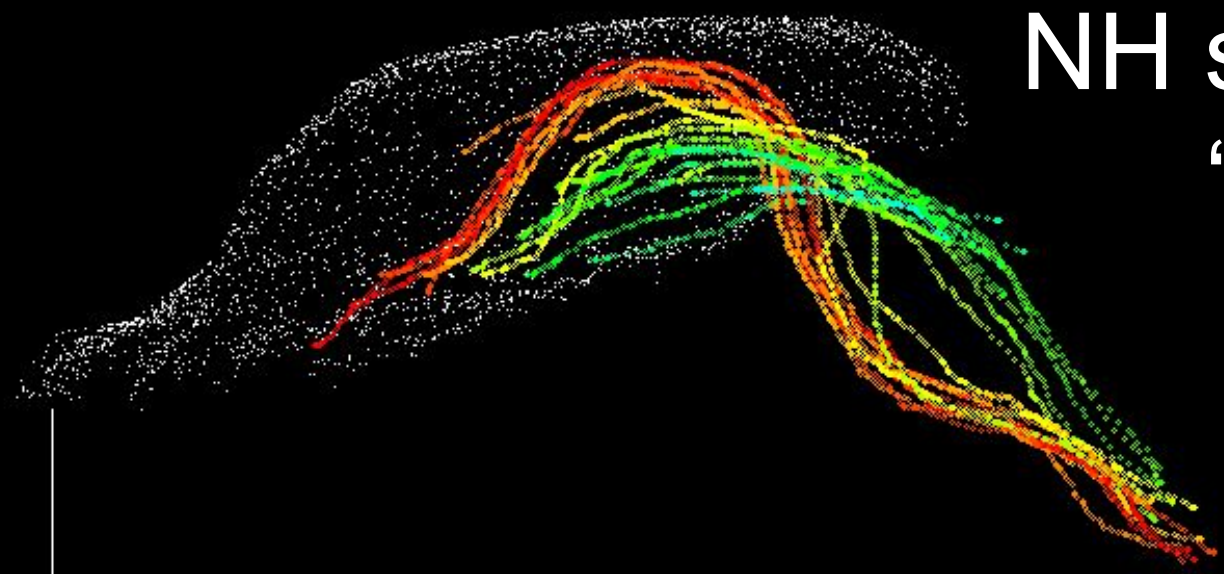
If you are interested in seeing any particular video, we will be glad to play it.

Targets: *keel, kill, call, leek, lick, lock, reek, rick, rock, roll, lore, coke*

iPad goes here.

/r/

NH speaker:
'lore'



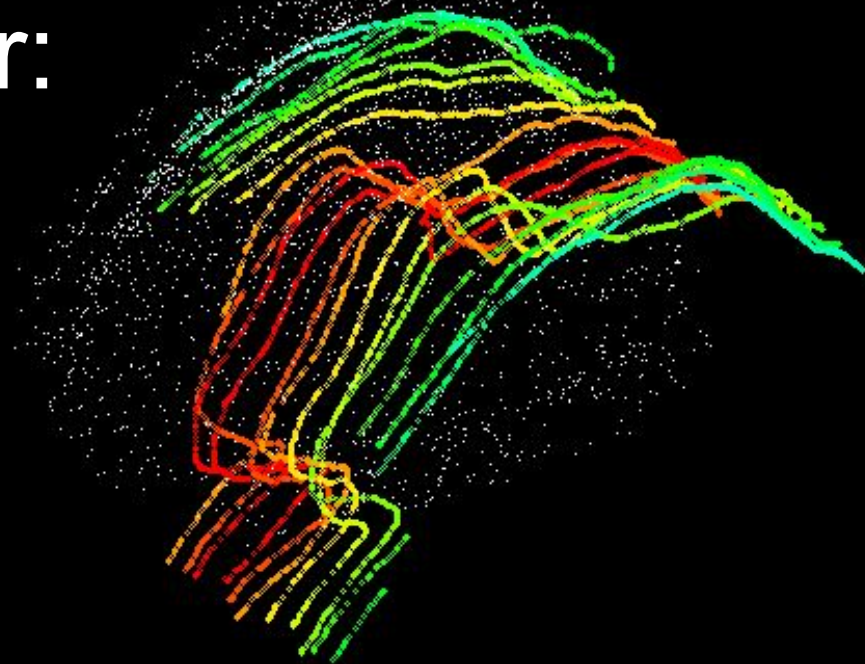
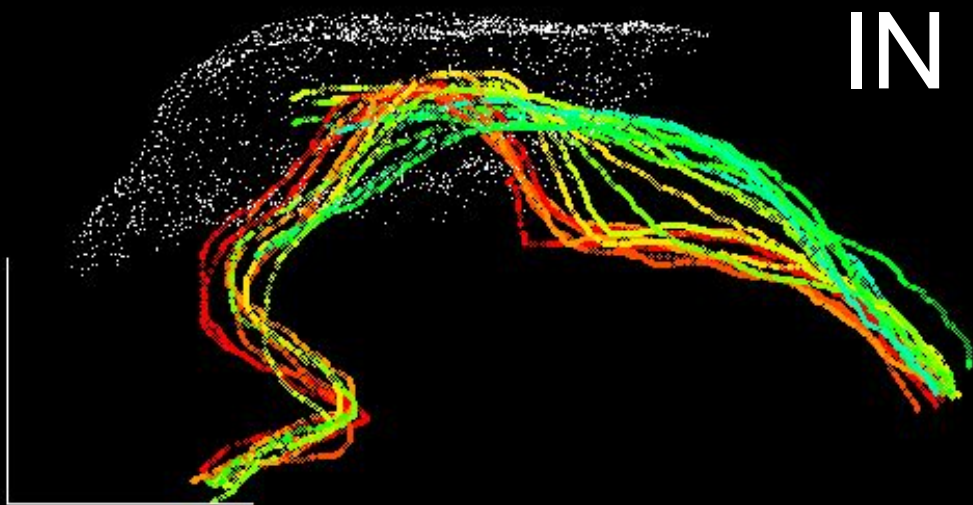
Examples of rhotic configuration from each talker.

Configurations are very similar, across vowel context and syllable position.

Note:

- Difference in shape from mid-line to edges of tongue
- Apparent pharyngeal constriction in mid-line due to cupping of the dorsum

IN speaker:
'rock'



Discussion of Laterals

Talkers differ in many respects

- Anatomically in palate size and depth
- Dialectally in the presence of coronal contact, Indiana talker lacks contact
- However, overall tongue configuration is similar despite differences, even despite lack of coronal contact in one talker

Consonant position with respect to the vowel affects articulation

- Coda // exhibits more obvious dorsal constriction
- Dorsal constriction trails coronal constriction in onsets, but precedes it in codas

Tongue shape varies extensively during constriction formation

- Dorsal midline is convex at time of posterior constriction
- Dorsal midline is concave at time of anterior constriction
- Laterals involve cupping of the anterior portion of tongue
- Rhotics involve even more extreme cupping of the posterior portion of the tongue (see above)